



HELPING OUR MEMBERS WORK TOGETHER
TO KEEP THE LIGHTS ON... TODAY AND IN THE FUTURE.

Our Mission

Helping our members work together to
keep the lights on ...
today and in the future.

Our Major Services

- Facilitation
- Reliability Coordination
- Balancing Authority
- Transmission Service/Tariff Administration

- Market Operation
- Transmission Planning
- Training
- Standards Setting
- Compliance Enforcement

OUR APPROACH:

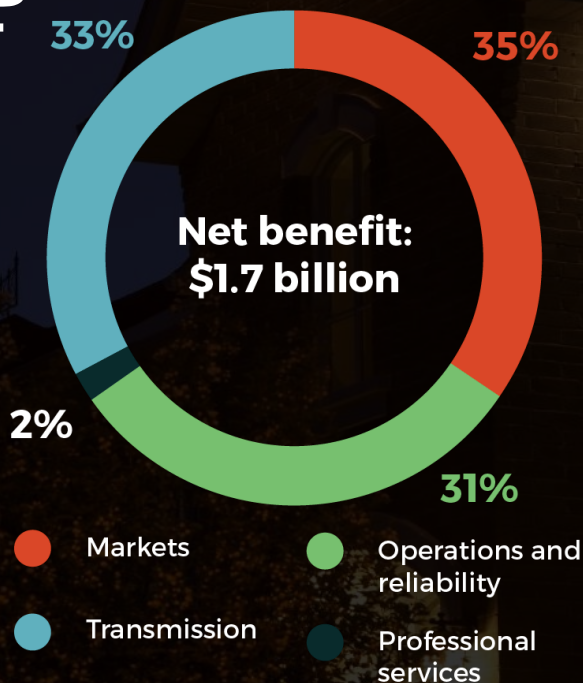
Regional, Independent, Cost-Effective and Focused on Reliability

Market Facts

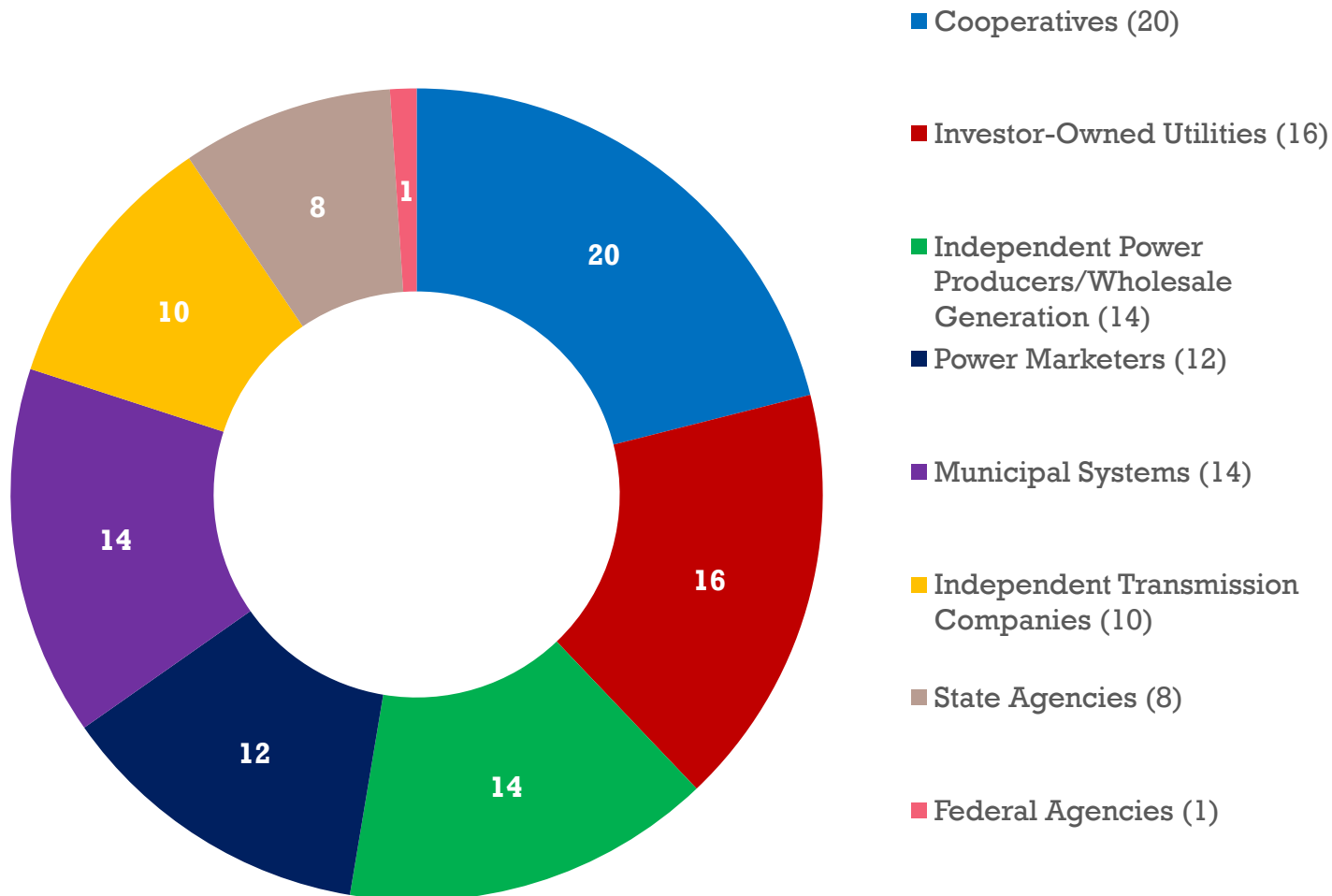
- 185 participants
- 726 generating resources
- 2016 Marketplace Settlements = \$15.8 billion
- 50,622 MW coincident peak load (7/21/16)
- Wind penetration record: 56.25% (12/4/17 @ 05:20)

THE VALUE OF SPP

- Transmission planning, market administration, reliability coordination, and other services provide net benefits to SPP's members in excess of more than \$1.7 billion annually at a benefit-to-cost ratio of 11-to-1.
- A typical residential customer using 1,000 kWh saves \$5.71/month because of the services SPP provides.



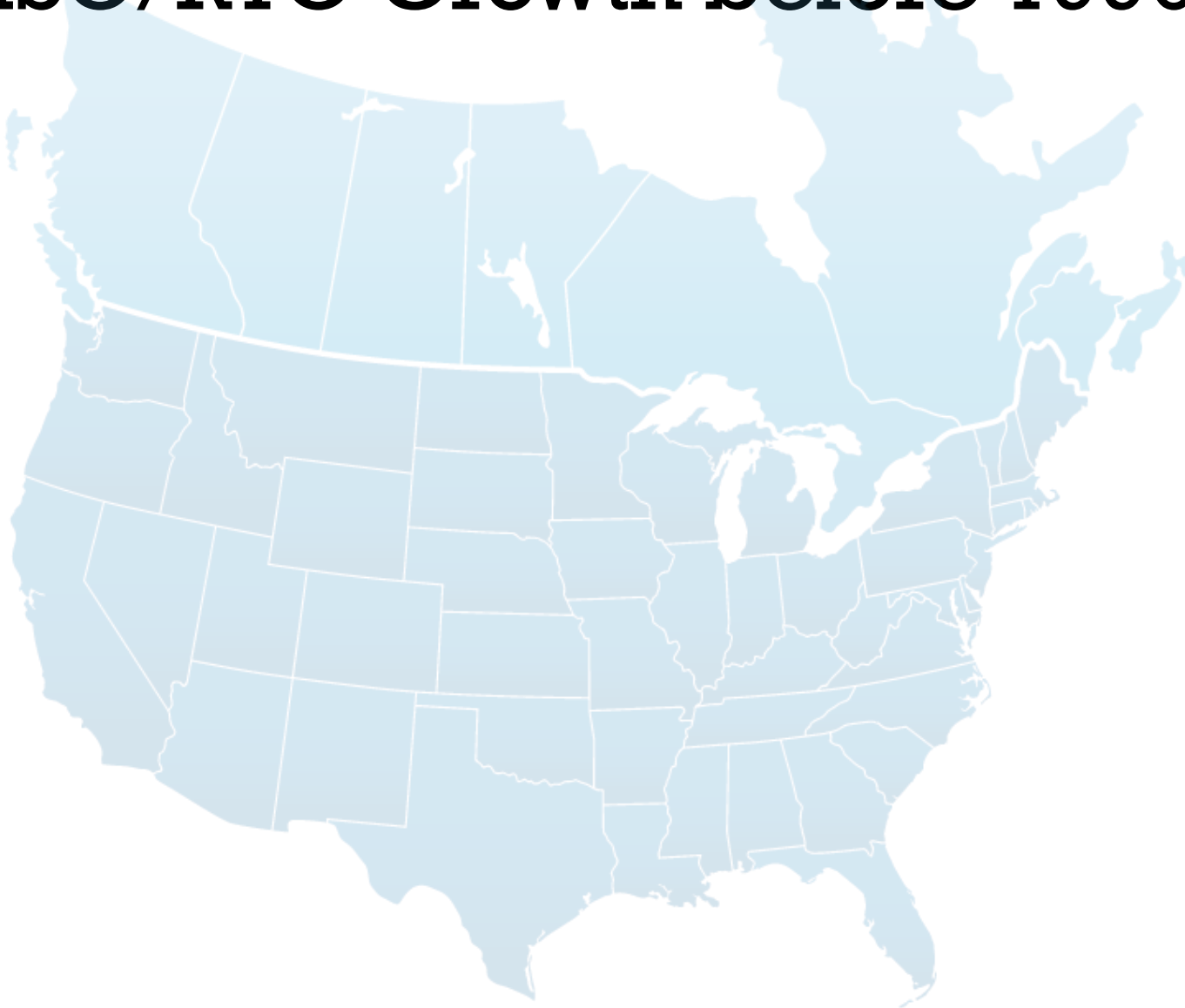
SPP's 95 Members: Independence Through Diversity



As of April 12, 2017

An Industry of Change

ISO/RTO Growth before 1996

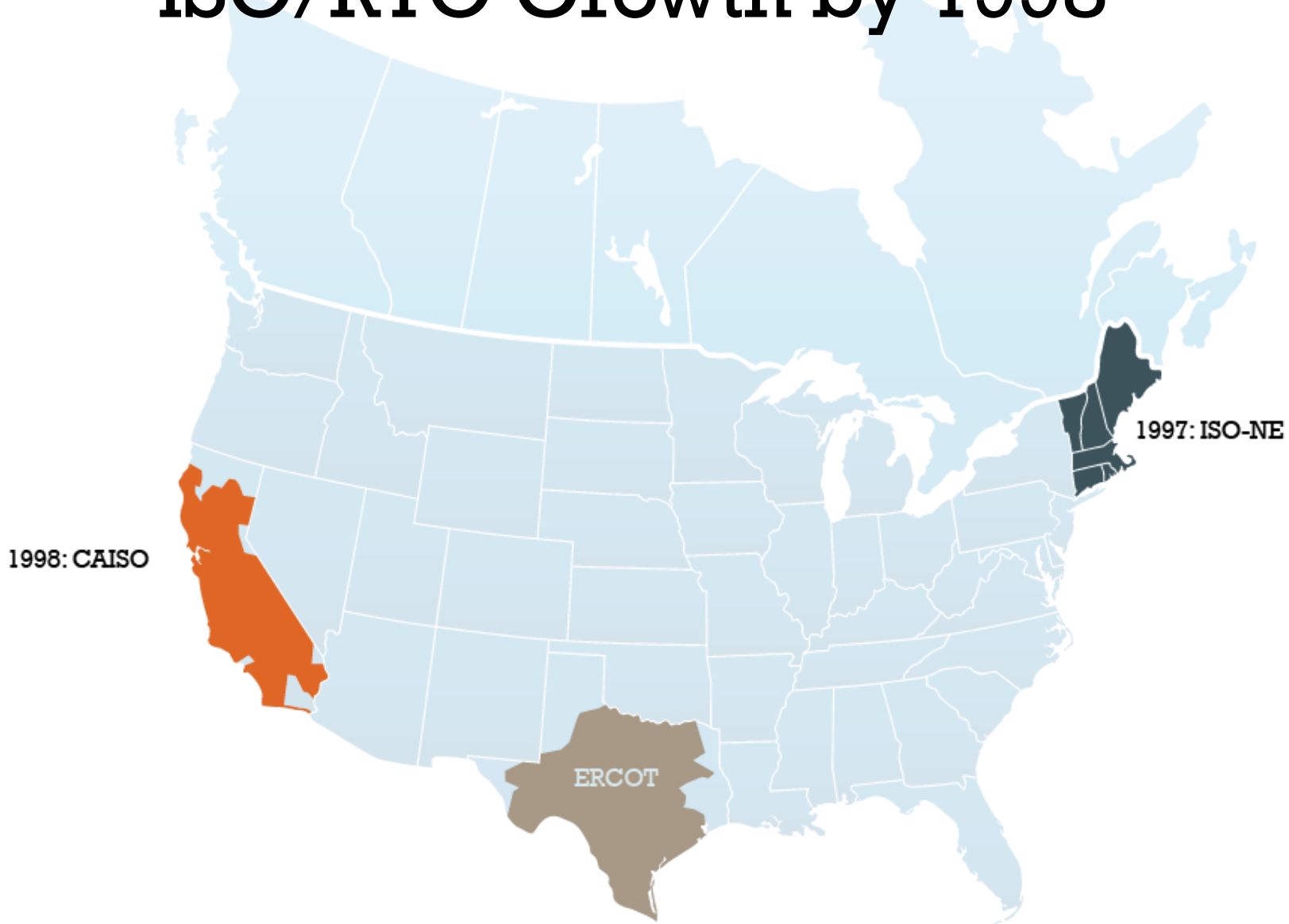


ISO/RTO Growth by 1996

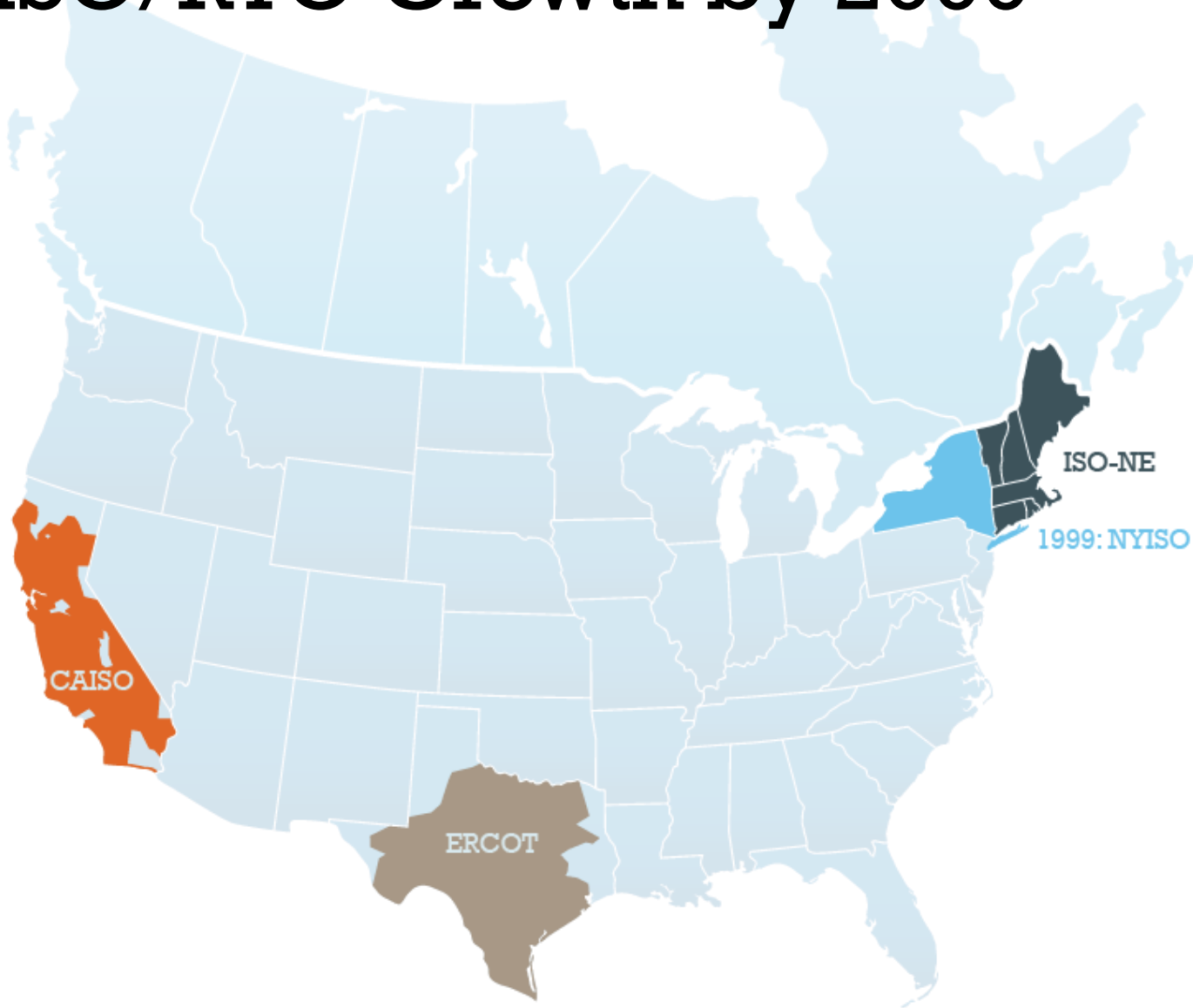


1996: ERCOT

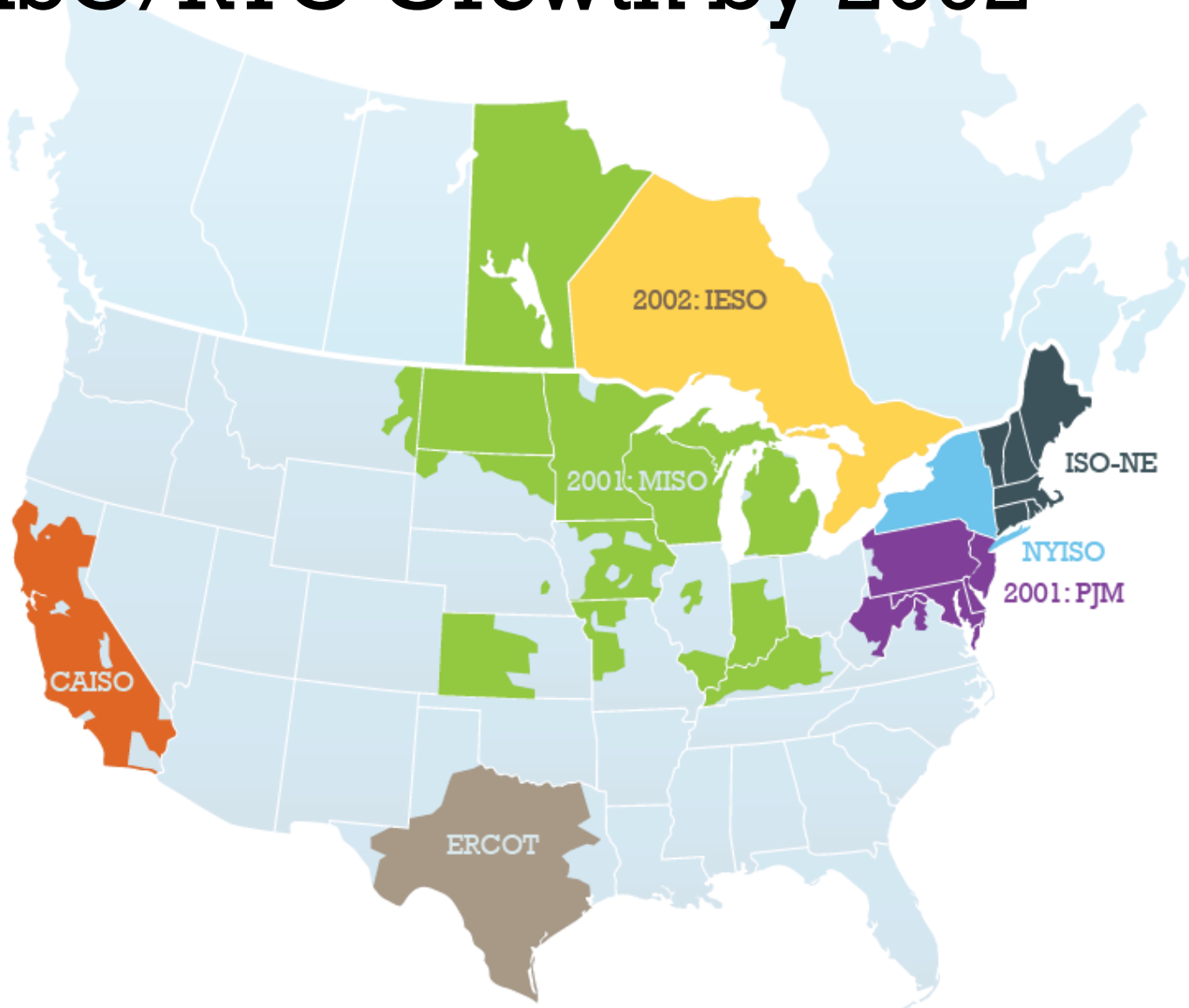
ISO/RTO Growth by 1998



ISO/RTO Growth by 2000



ISO/RTO Growth by 2002



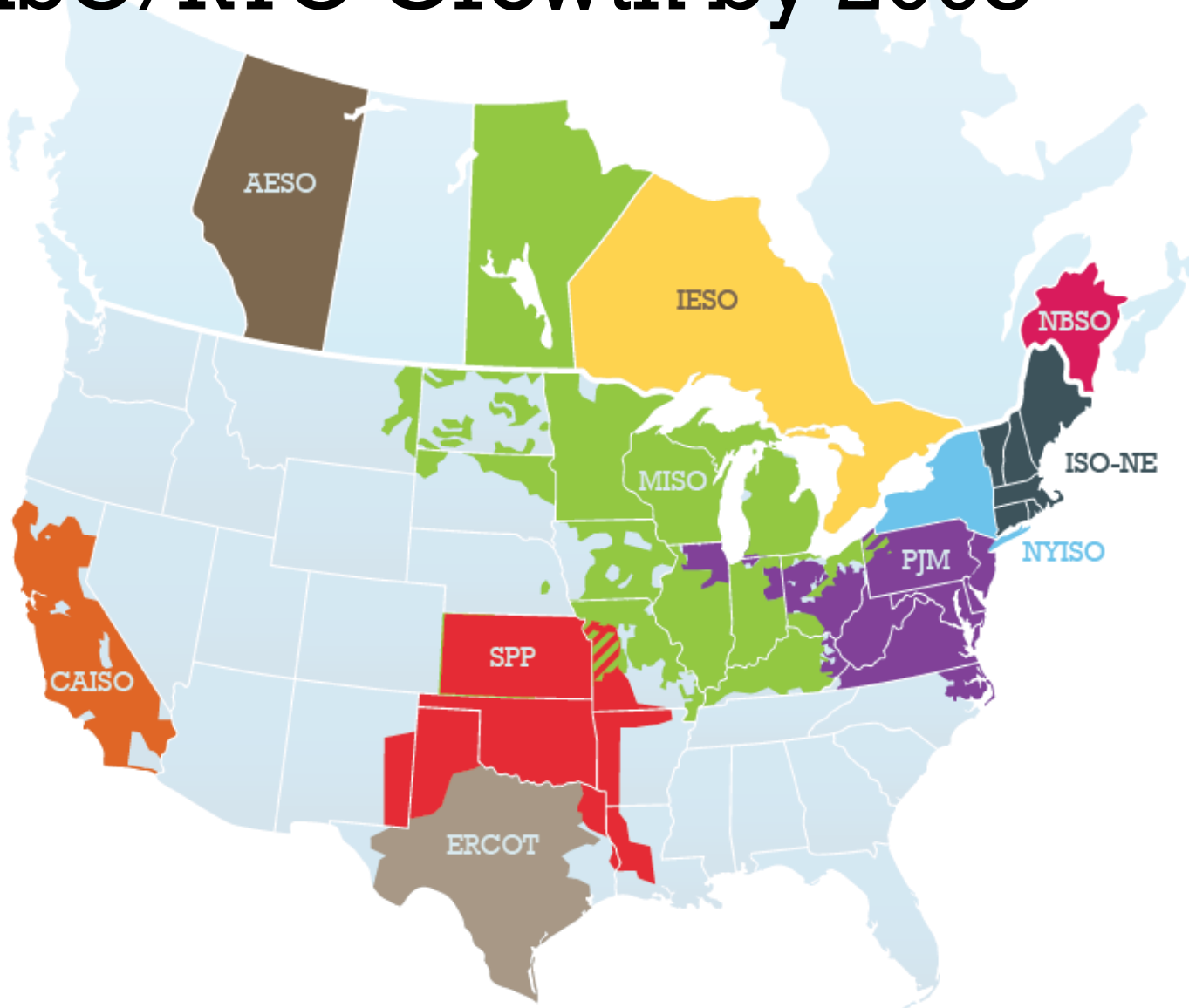
ISO/RTO Growth by 2004



ISO/RTO Growth by 2006



ISO/RTO Growth by 2008



ISO/RTO Growth by 2010



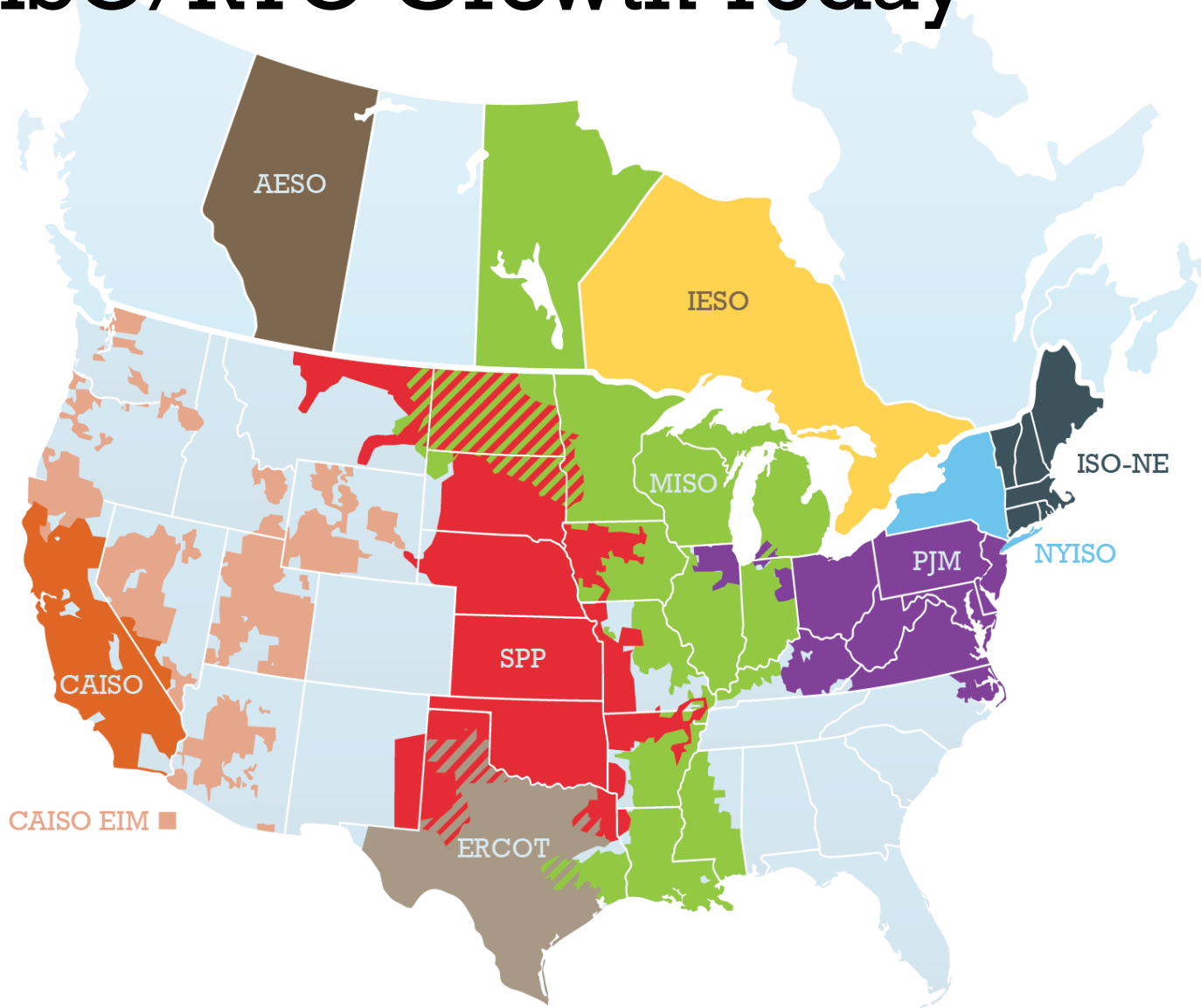
ISO/RTO Growth by 2012



ISO/RTO Growth by 2014



ISO/RTO Growth Today



Western Interconnection Evolution

- January 2017: Mountain West Transmission Group announces intent to pursue membership in SPP
- December 2017: Peak Reliability and PJM Connex announce partnership to explore developing markets in the West
- January 2018: CAISO announces plans to become a Reliability Coordinator



Mountain West Transmission Group

Mountain West Transmission Group (MWTG)

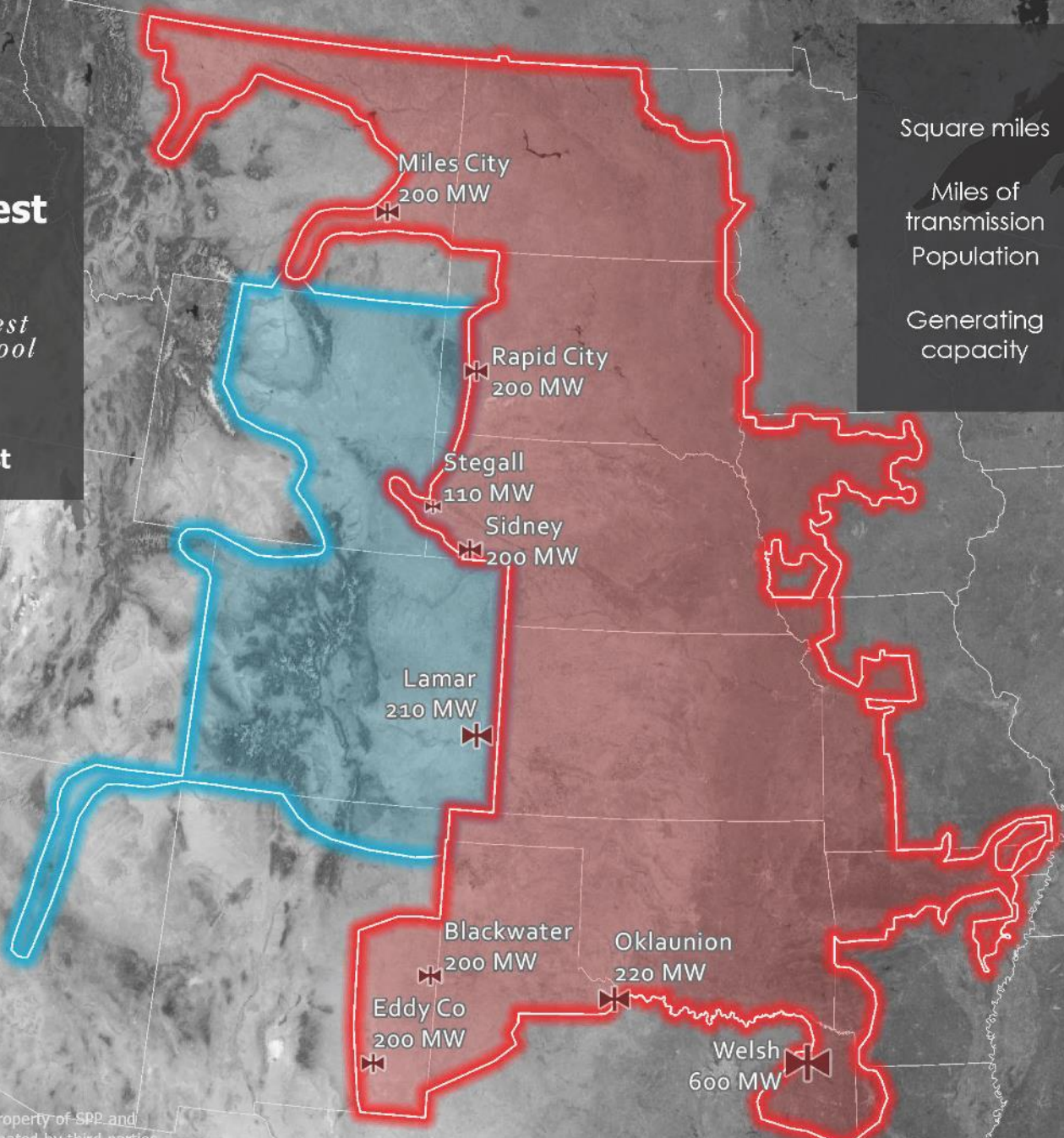
1. Basin Electric Power Cooperative (BEPC)
2. Black Hills Energy (BHE)
 - a) Black Hills Power, Inc.
 - b) Black Hills Colorado Electric
 - c) Cheyenne Light, Fuel and Power
3. Colorado Springs Utilities (CSU)
4. Platte River Power Authority (PRPA)
5. Public Service Company of Colorado (PSCo)
6. Tri-State Generation and Transmission Association, Inc. (TSGT)
7. Western Area Power Administration
 - a) Loveland Area Projects (WAPA RMR)
 - b) Colorado River Storage Project (WAPA CRSP)

SPP & Mountain West Footprint



SPP

Mountain West



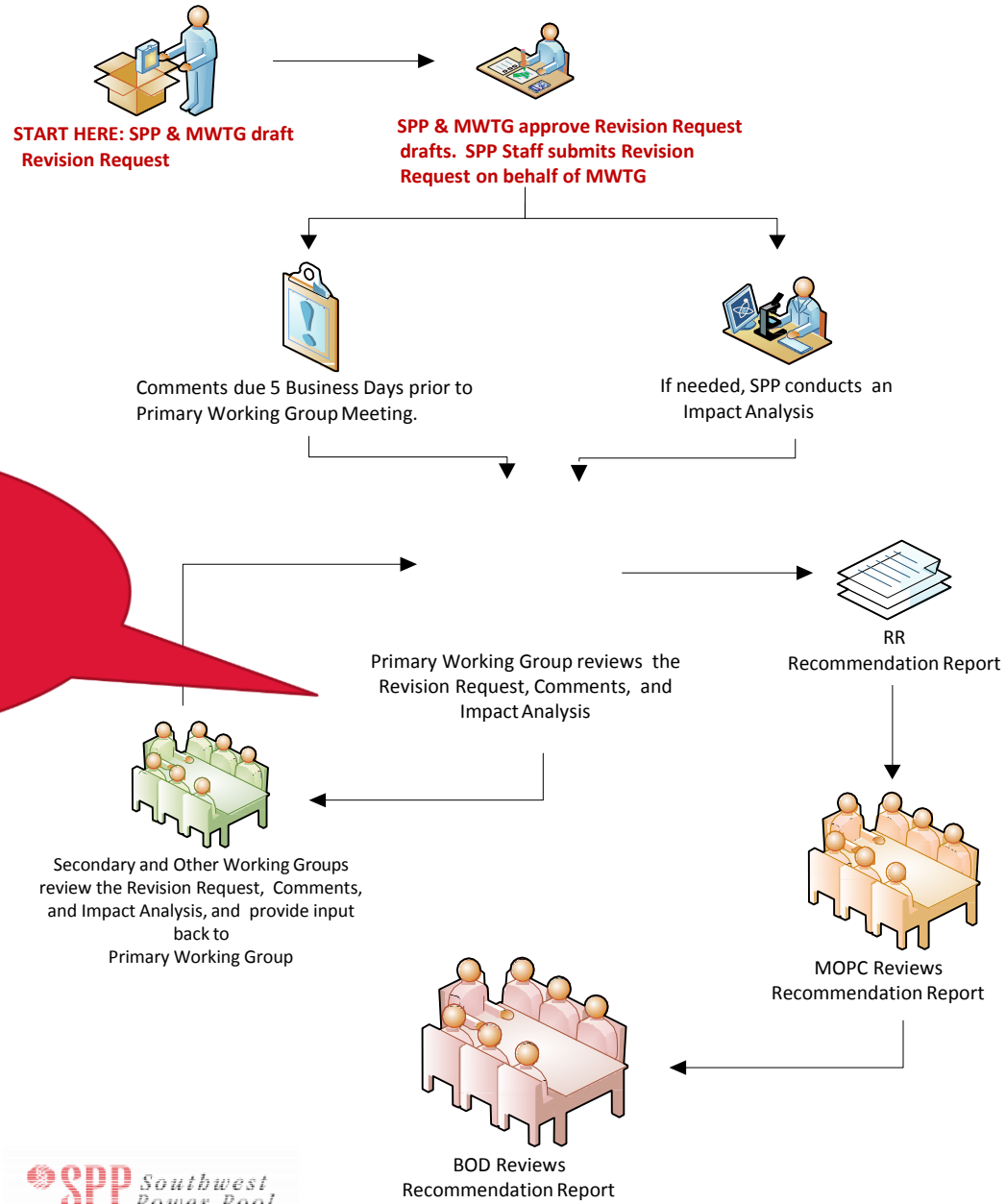
	SPP	MWTG
Square miles	546,000	165,000
Miles of transmission	65,755	16,000
Population	17.5 mil	6.4 mil
Generating capacity	83,945 MW	21,000 MW

This map contains the intellectual property of SPP and may not be used, copied or disseminated by third parties without the express permission of SPP. All rights reserved.
 Date Exported 10/6/2017 1 inch equals 178 miles

Significant Work to Date

- **Strong cooperative effort amongst MWTG over three years**
 - Conducted a Market Study to evaluate benefits of having a joint tariff as well as a joint tariff with a full Day-2 market
 - Developed a Request for Information for RTO response
 - CAISO, MISO, PJM, SPP responded
 - Selected SPP with term sheet being negotiated since January 2017
 - Significant success with resolving issues around rate design and cost shift mitigation
- **Engagement from SPP's existing members and stakeholders through New Member Integration Process**

The Revision Request Process, at a Glance specific to MWTG Integration



Opportunity to be involved, SPP stakeholder process

Next Steps

- Enter and complete final negotiations of policy impacts of MWTG joining SPP
- Complete revisions to SPP's governing documents
 - Regulatory filings and approvals (mid to late summer '18)
- Reliability Coordinator certification process with go-live Q3 '19
- Market implementation and go-live Q4 '19-Q1 '20

