



# Gila River Indian Community Utility Authority



PRESENTATION TO THE  
ARIZONA TRIBAL ENERGY ASSOCIATION

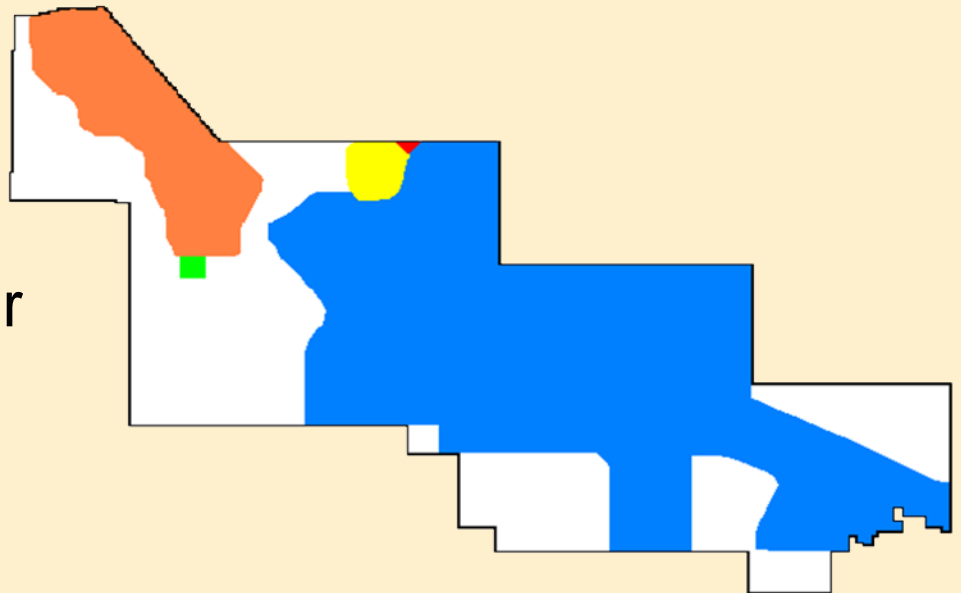
## **GRICUA'S SOLAR PROJECT JOURNEY**







JANUARY 24, 2019

# Who We Are...

## Gila River Indian Community Utility Authority (GRICUA):

- An entity of the Gila River Indian Community (GRIC or Community)
- Serves load within the Gila River Indian Community Reservation (Reservation)
- Re-established in 1998



Key	
	SRP
	APS
	GRICUA Lone Butte Business Park
	GRICUA Wild Horse Pass
	SCIP & GRICUA
	Unshaded area to be served by GRICUA

# Who We Are...

- Currently, we have 2,580 residential customers and 803 commercial customers.
- Peak demand of 54 MW's and Energy Sales of approximately 250,600,000 kWh's.



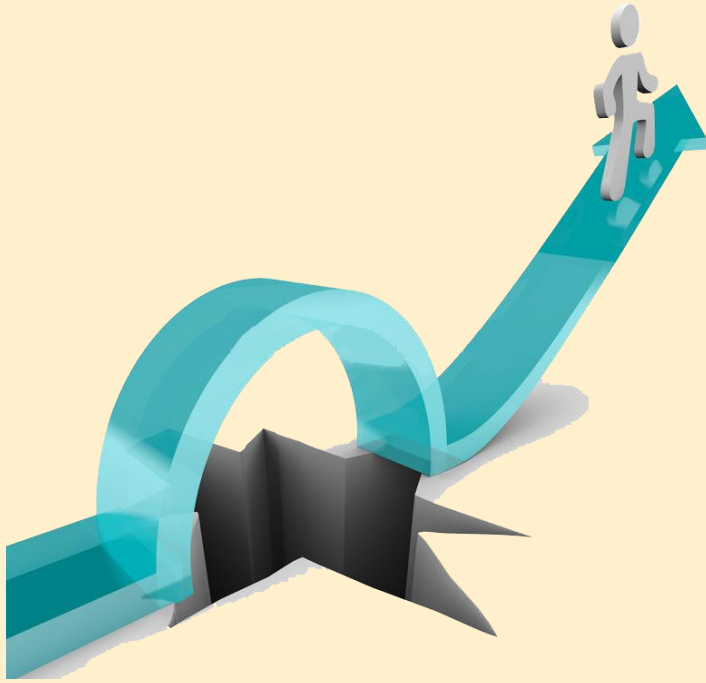
# Beginning Our Journey – Where To Start?



- I. Gather Information About Solar
- II. Educate Staff, Board, Council & Community
- III. Develop A To-Do List
- IV. Prepare A Timeline
- V. Take First Steps



# Identifying Potential Pitfalls – They Will Occur!



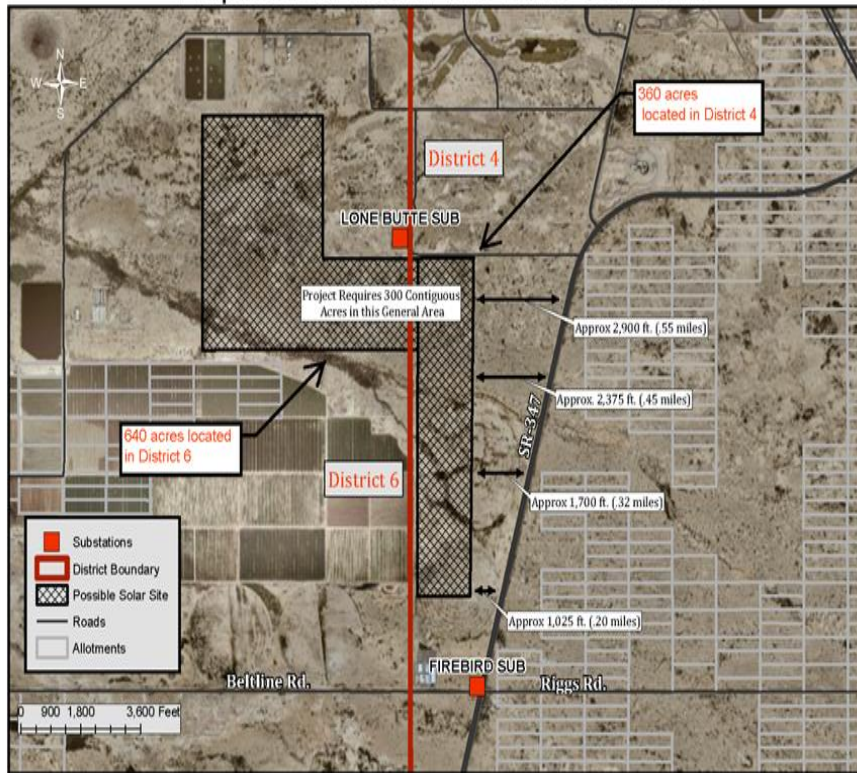
## Potential Pitfalls

- I. District & Community Support
- II. Land Issues
- III. Cost Issues
- IV. Other

# Ready To Proceed To Develop Project?



Proposed GRICUA Lone Butte Solar Site



## Establish Solar Project Goals

I. Project Size

II. Project Structure

III. Off-taker Of Solar Energy

IV. GRICUA Benefits

V. Community Benefits





# Catch 22 – Which Comes First?



- Purchase Power Agreement
- Land Lease
- Developer



# Request For Proposal Process



<ul style="list-style-type: none"><li>Identify Scope of Project</li></ul>	<ul style="list-style-type: none"><li>Estimated Purchase Power Agreement Costs</li></ul>
<ul style="list-style-type: none"><li>Obtain Financial Information</li></ul>	<ul style="list-style-type: none"><li>Project Team</li></ul>
<ul style="list-style-type: none"><li>Obtain Qualifications</li></ul>	<ul style="list-style-type: none"><li>Similar Project Experience</li></ul>
<ul style="list-style-type: none"><li>Estimated Project Costs</li></ul>	<ul style="list-style-type: none"><li>Jobs, Training &amp; Education</li></ul>



Finding Partner  
Who Is Compatible  
With GRICUA  
Goals.





# Evaluation Of Responses To RFP



- Establish review team
- Distribute responses
- Review team meets and rates responses
- Conduct interviews
- Identify preferred developer



# What Comes Next?



- Check references of preferred developer
- Update GRICUA Board, Districts, EDSC & Community
- Obtain support to proceed
- Proceed to contract(s) development

# Is Our Journey Complete? - Not Quite.



## Still Needed:

- Support to proceed
- Completion of Land Use requirements
- Finalized Agreements
- Purchase Power Agreements
- Begin Construction
- Target In-Service Date: December 2020